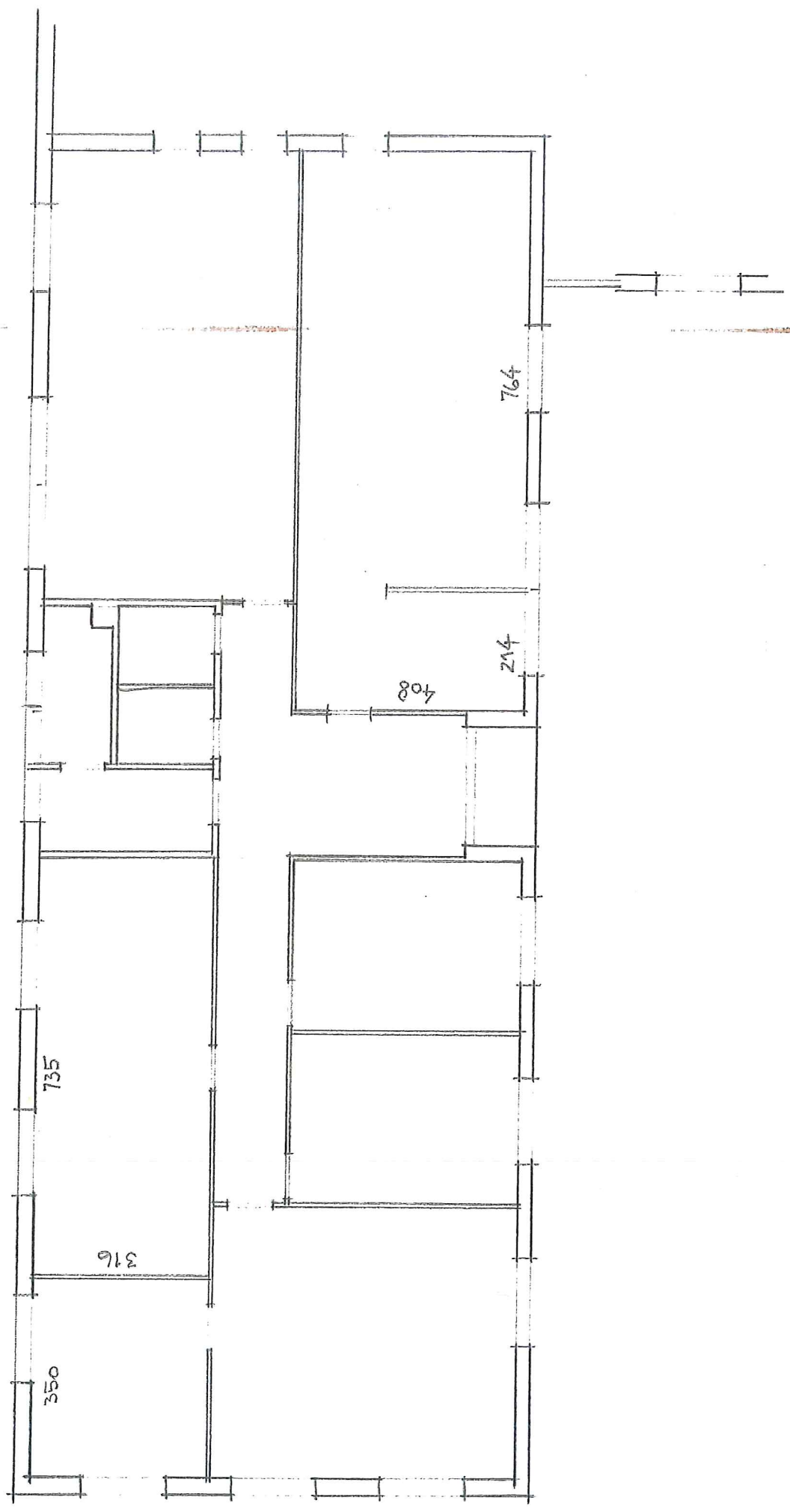


Fabrikat "CENTRUM"

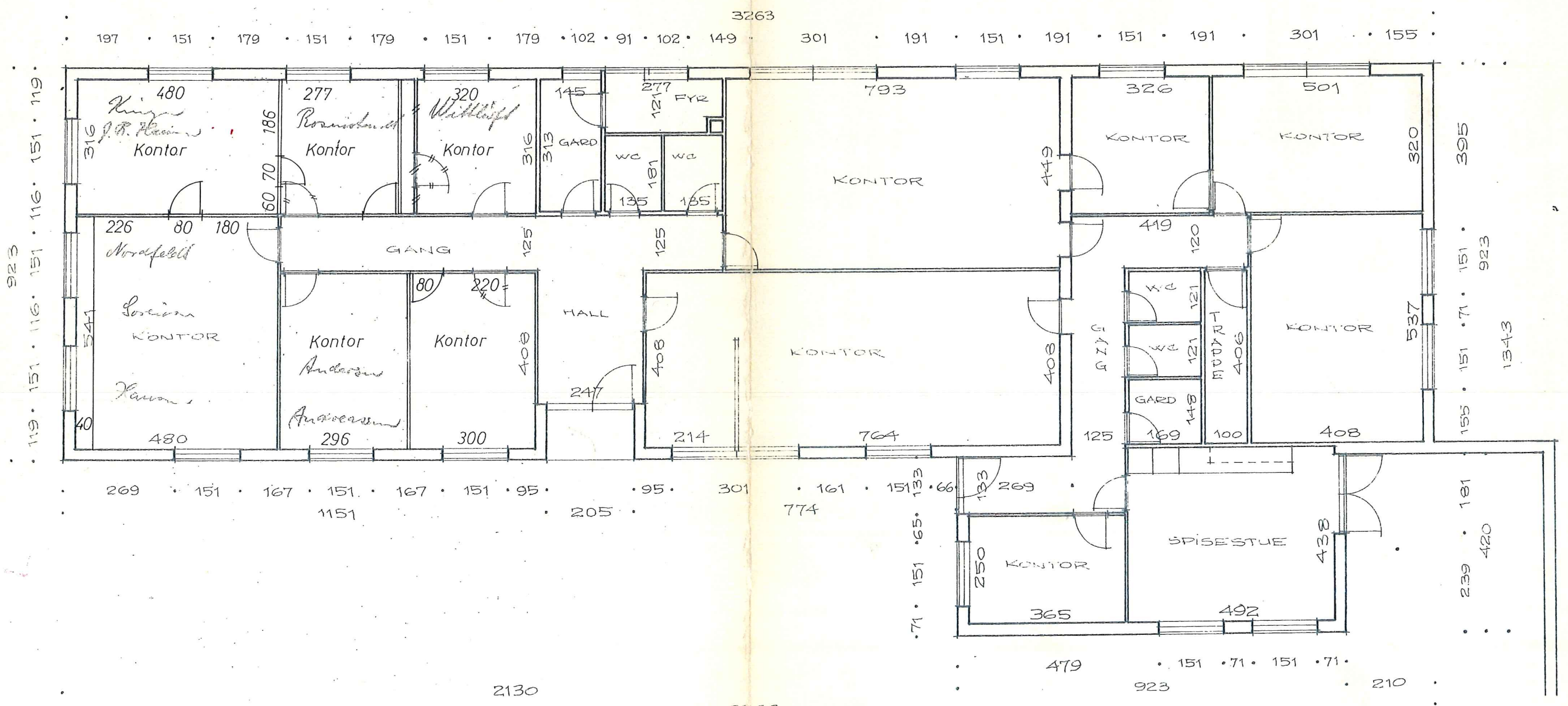
2 stk. vinduer, type 1T-4", 9x6
 16 stk. ———, type 1V-4", 15x14
 1 stk. facadedør, type A1, 9x21
 grundudførelse (køkken)
 1 stk. facadedør, type A1, 9x21
 listegitter (fyrrum)
 1 stk. facadedør, type A1, 9x21
 listegitter og brevskilt (Hall)
 Alle med glaslister af Teak.
 Termoruder overalt und-
 tager i fyrrum, garde-
 robe.

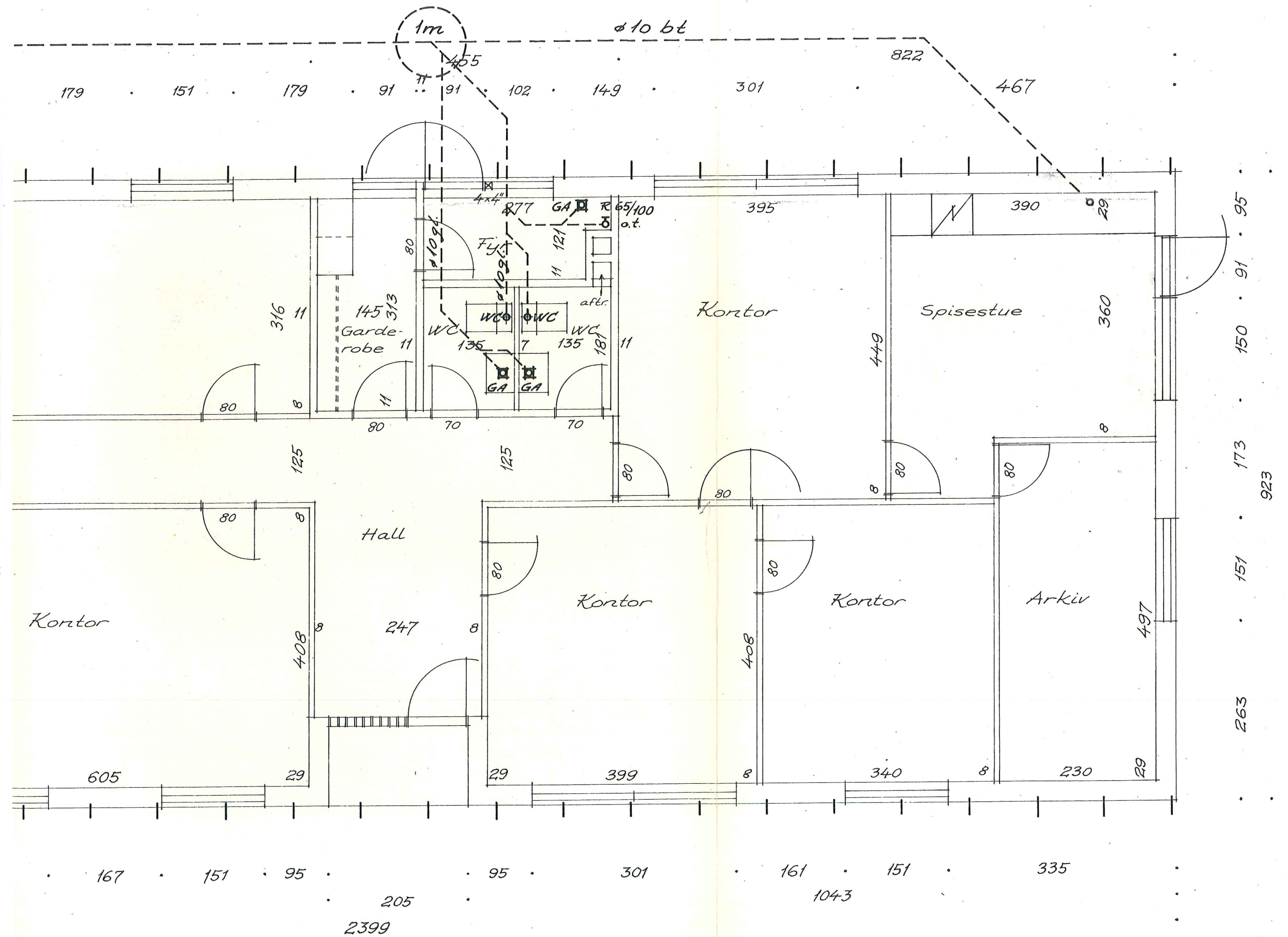
JK
9.1.75



Fremlagt i TU-møde

Sag nr. T 549 den 24 FEB. 1972





923
 150 · 91 · 95
 173
 151 · 173
 263

Grundplan 1:50

φ 15 bt

TRIX-TANK

φ 10 bt

1m

φ 10 bt

119
151
116
151
116
151
119

923

29

252

8

605

29

480

541

8

1093

Tegnestue

80

80

80

80

Kontor

605

29

316

11

145

313

Garde-robe

11

80

80

80

70

70

125

125

Hall

247

80

Kontor

29

399

269

151

167

151

167

151

95

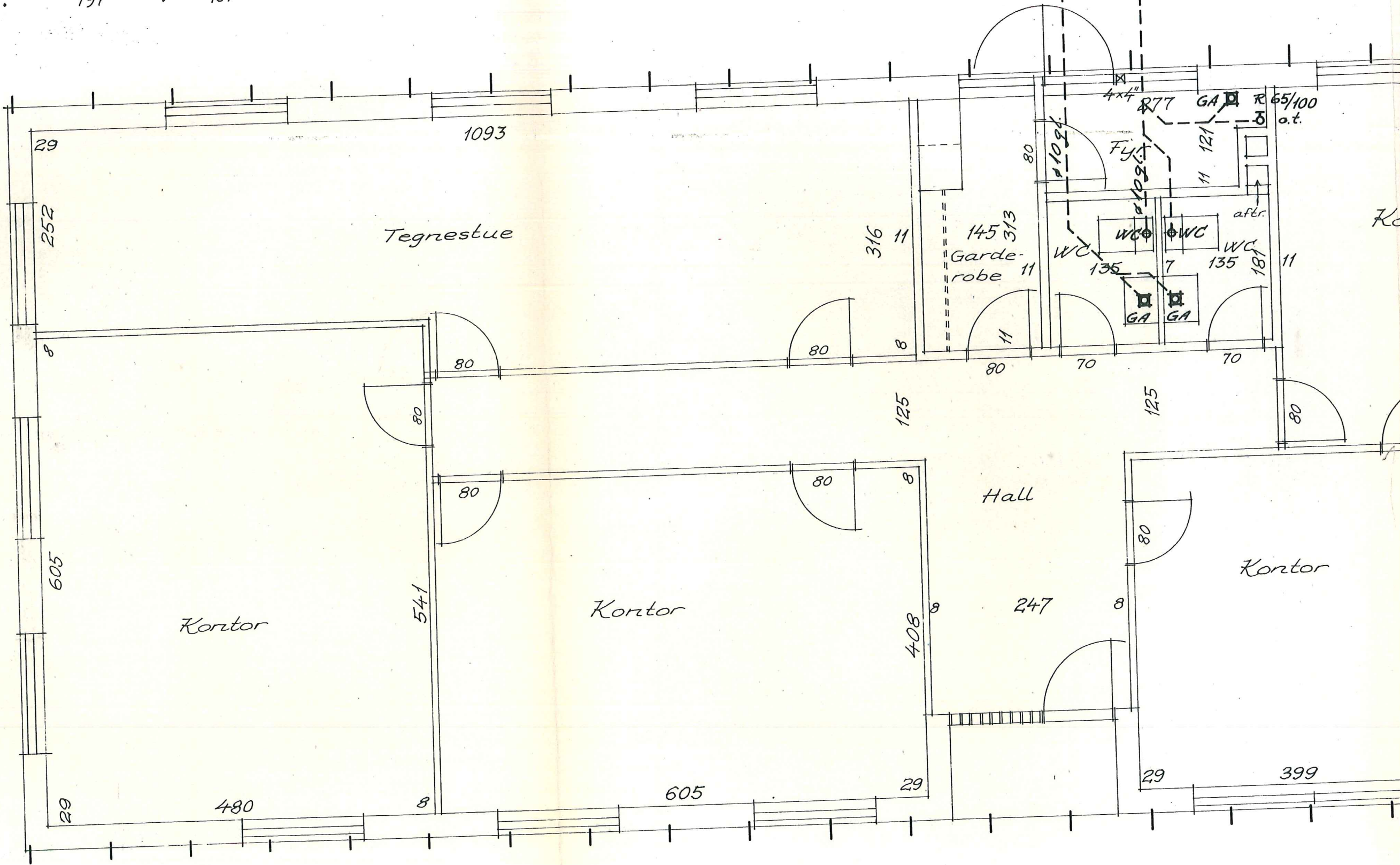
205

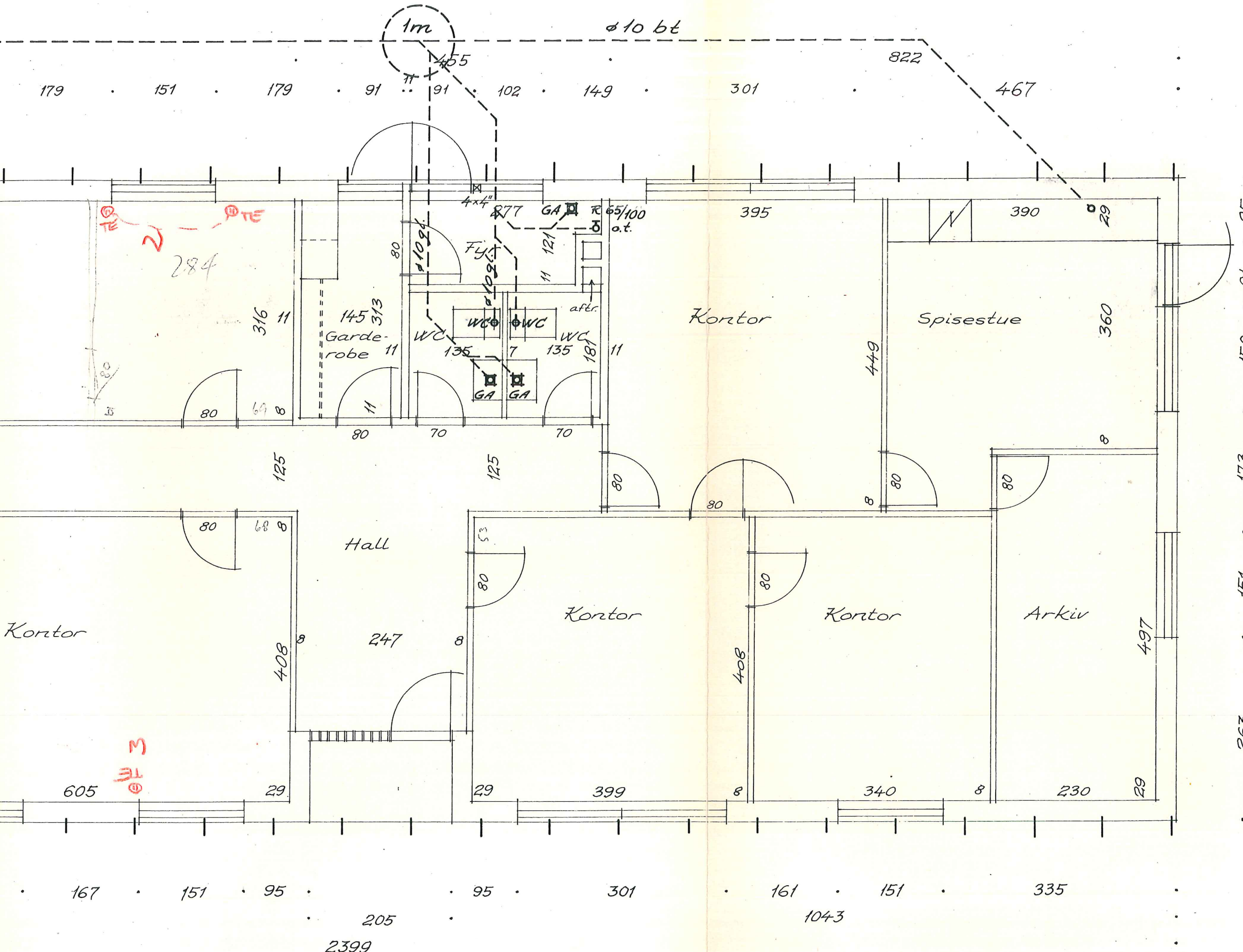
95

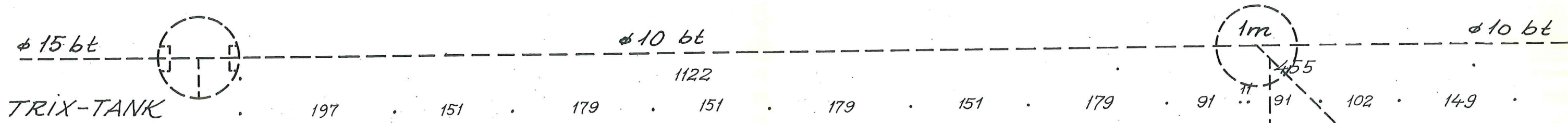
301

1151

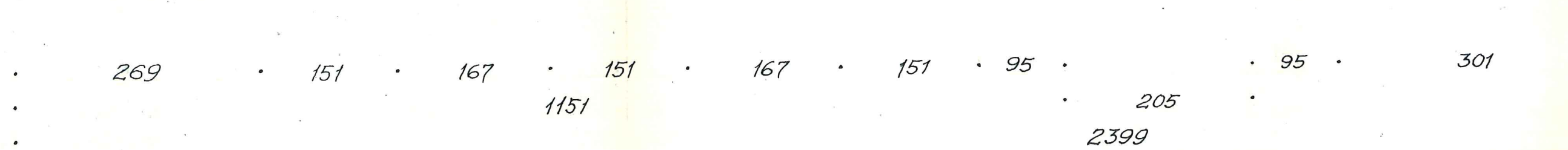
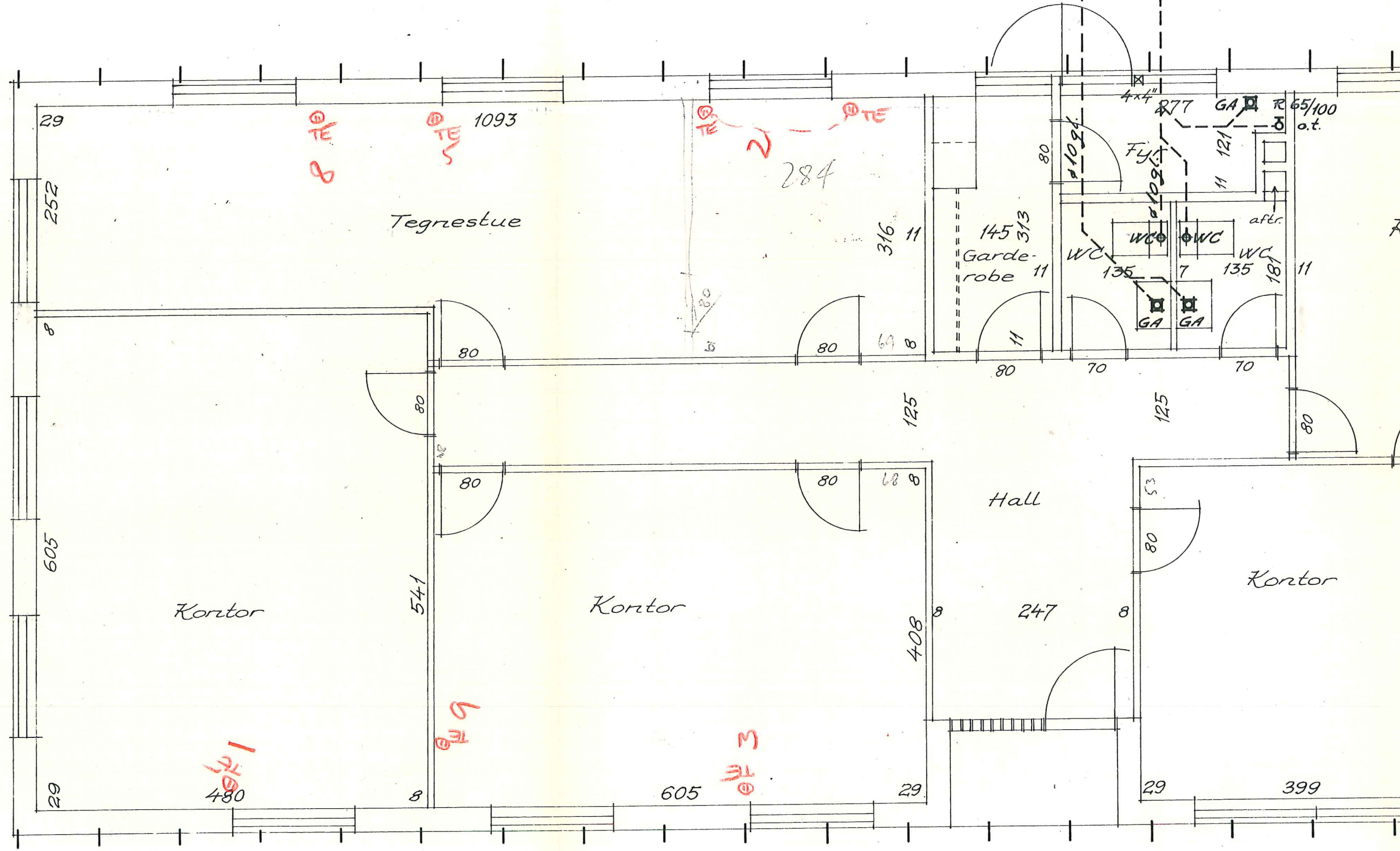
2399



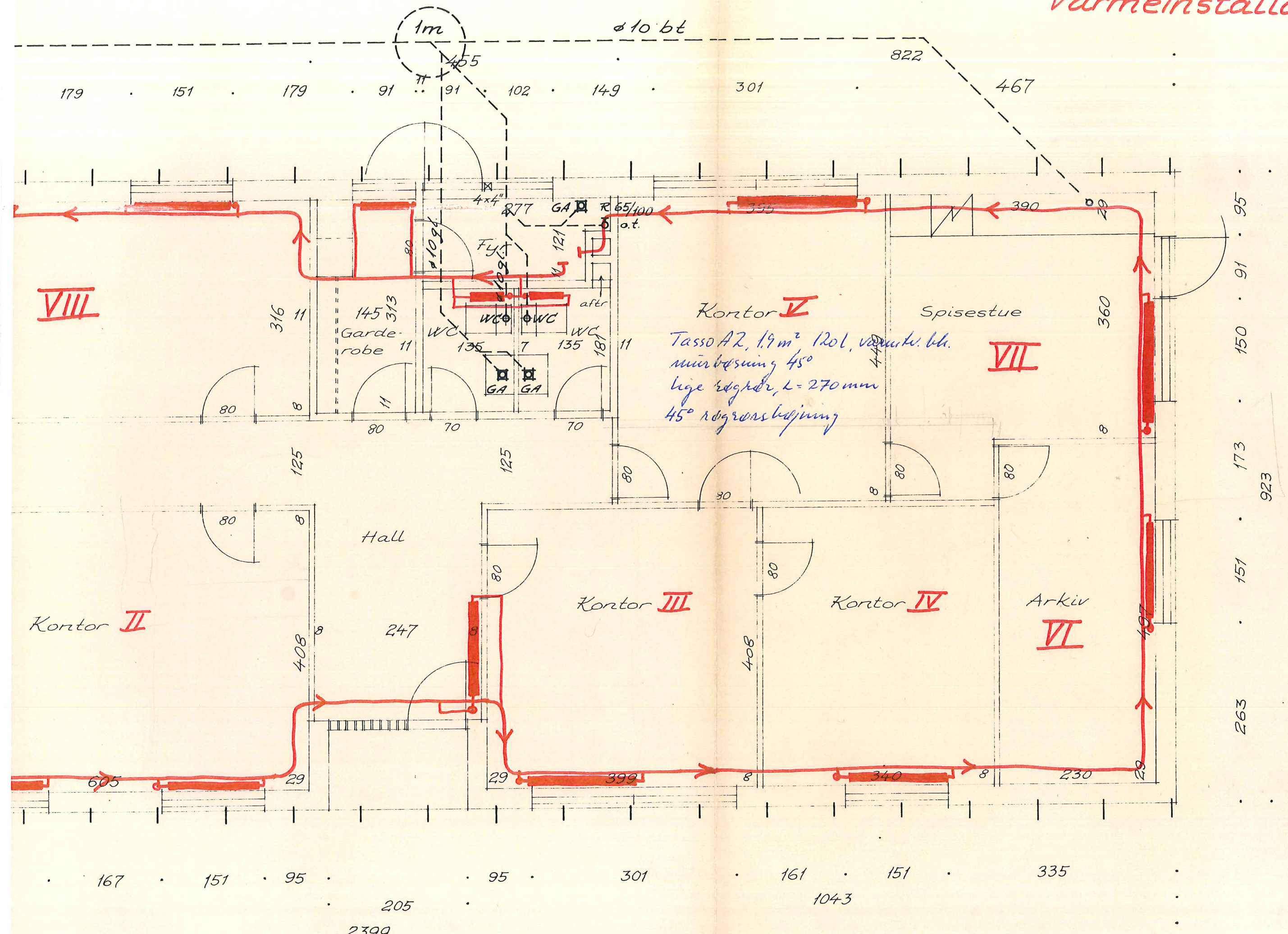




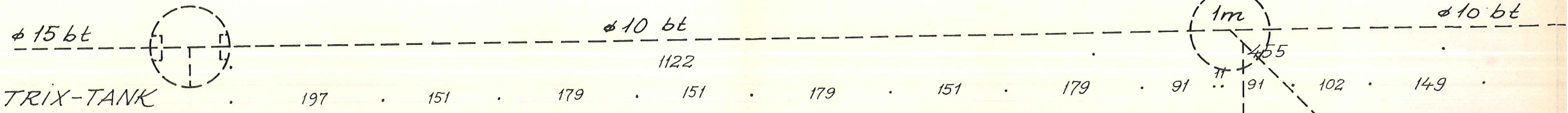
923
 119 · 151 · 116 · 116 · 151 · 119



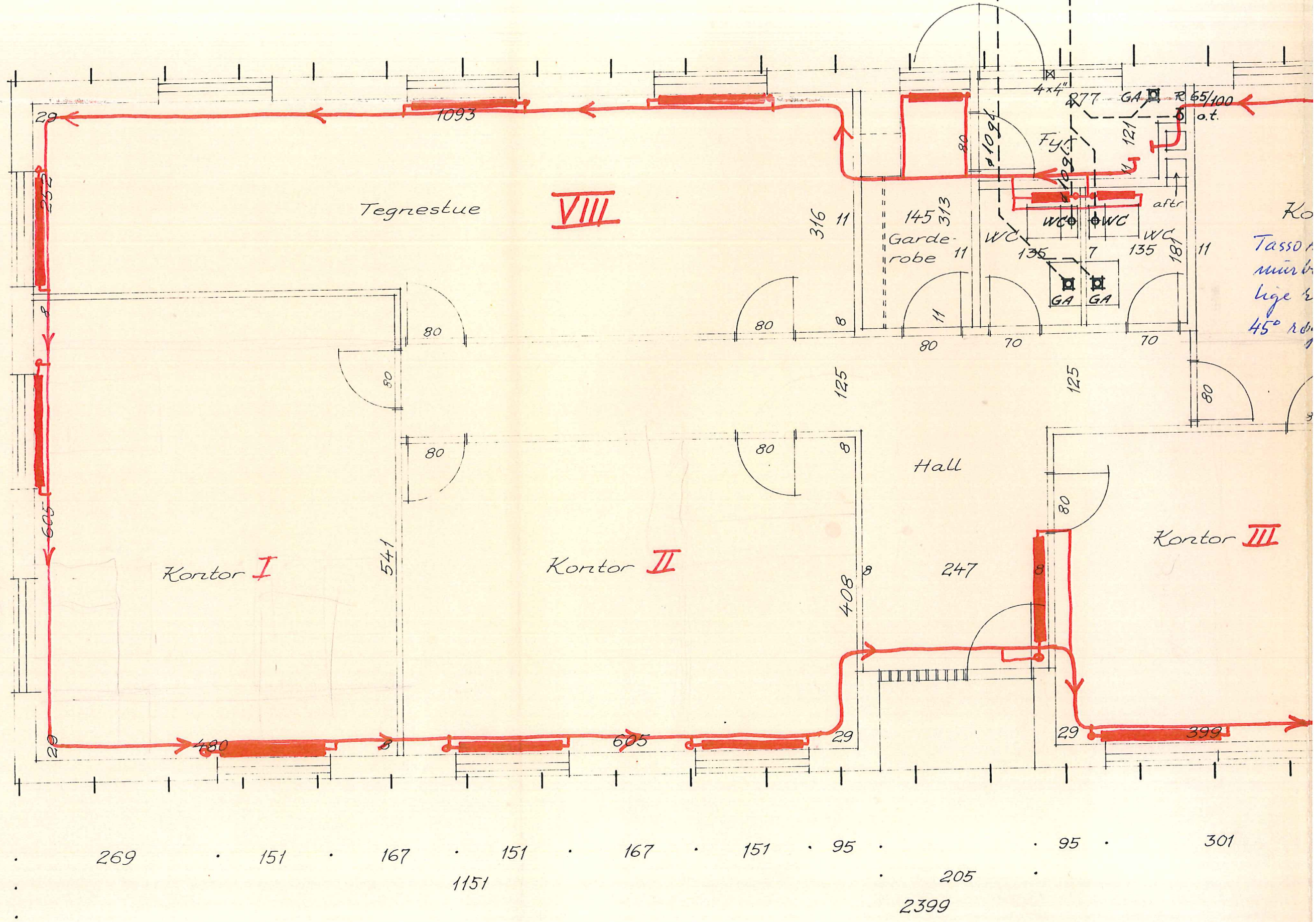
Varmeinstallation.



Grundplan 1:50



TRIX-TANK



Ro
Tasso
mür
lige
45° rd

119 · 151 · 116 · 151 · 116 · 151 · 116 · 151 · 119

923

269 · 151 · 167 · 151 · 167 · 151 · 95 · 95 · 301
 1122
 1151
 205
 2399