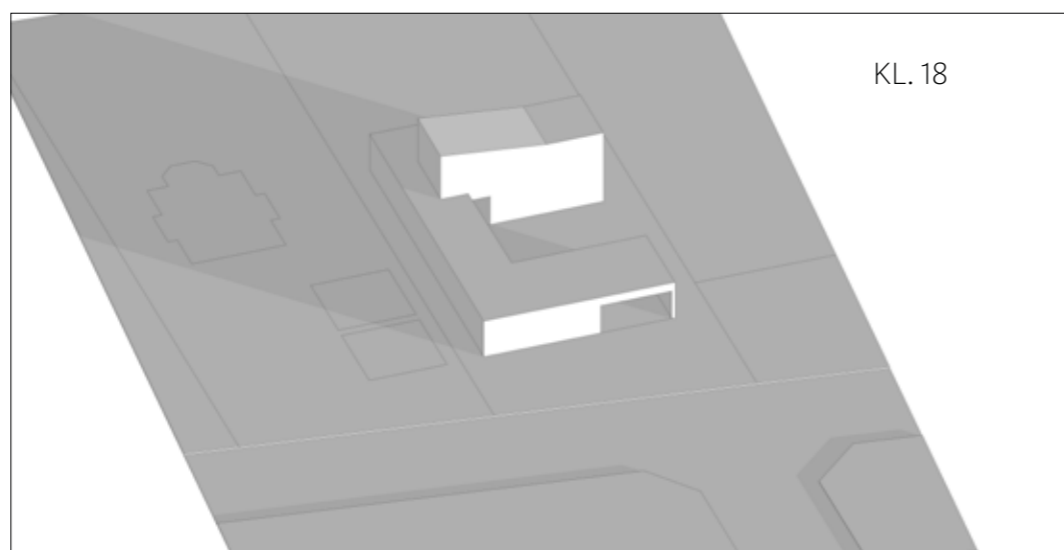
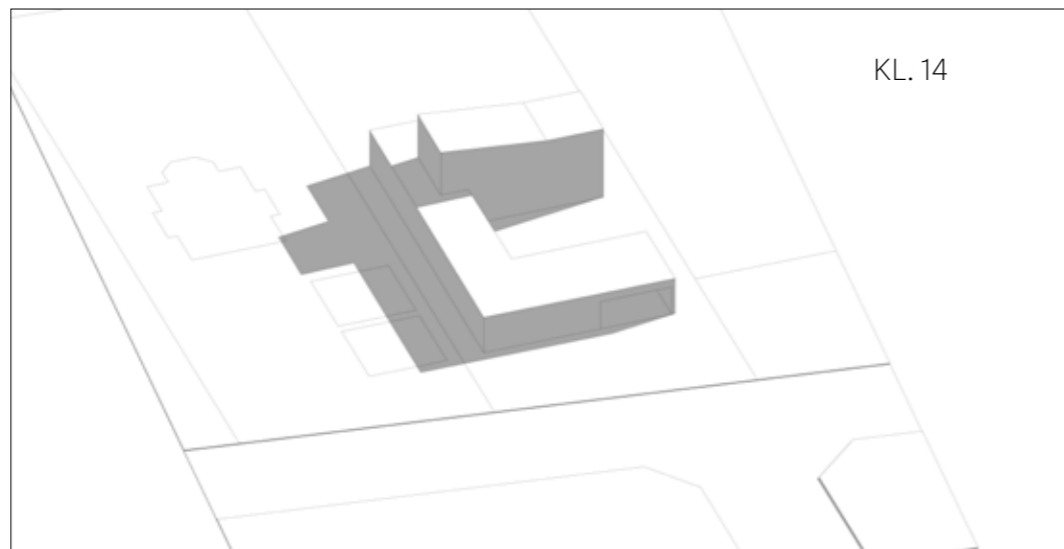
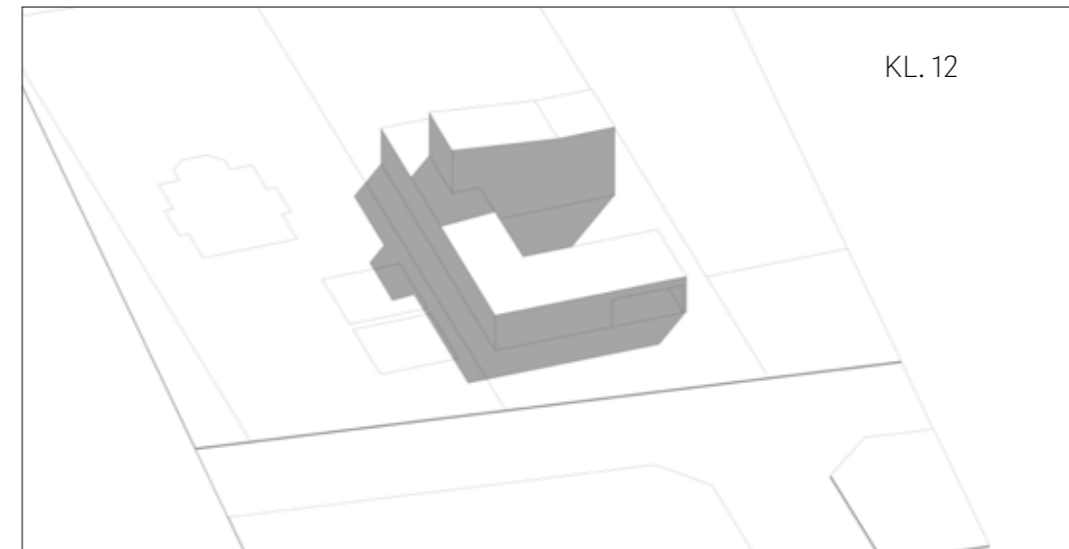
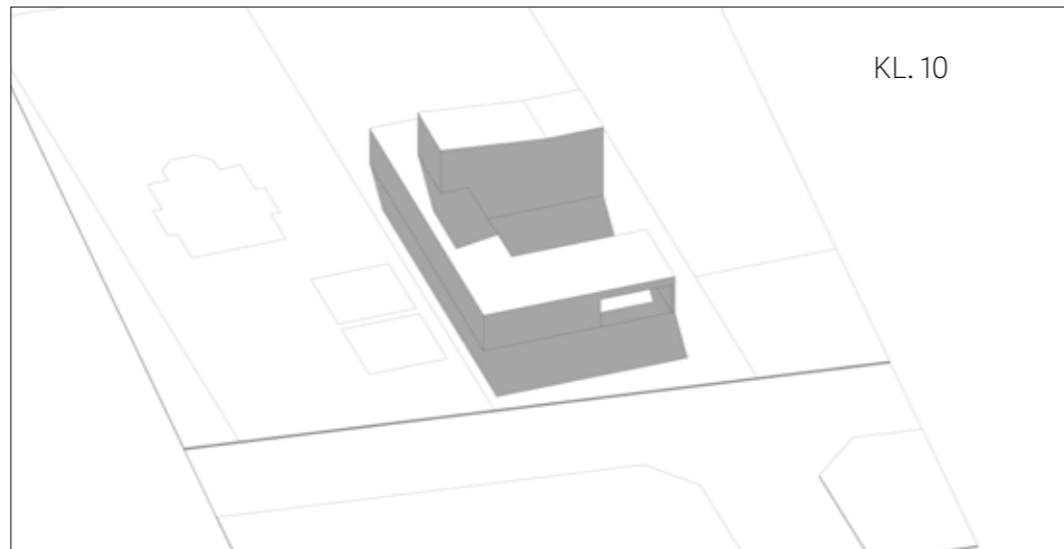
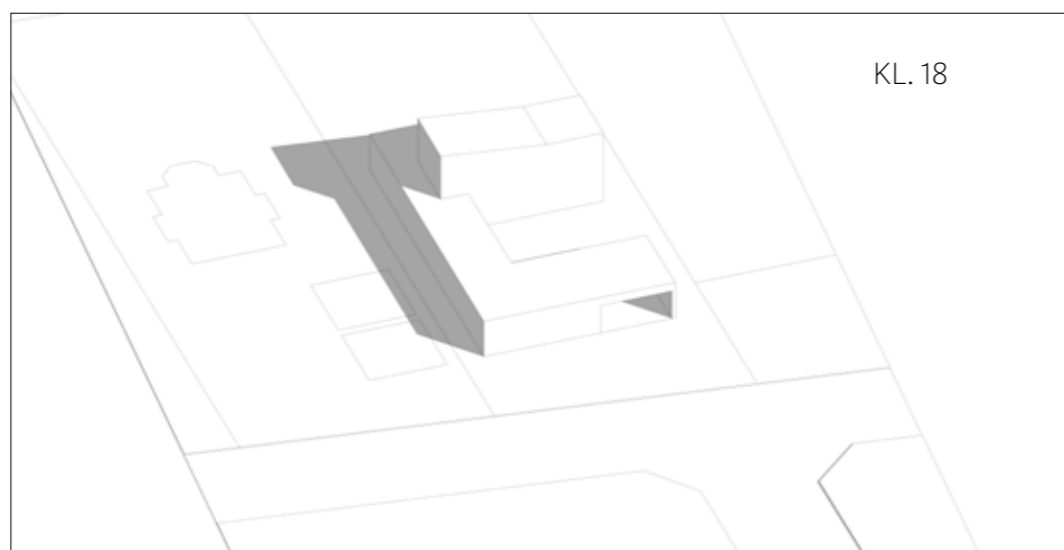
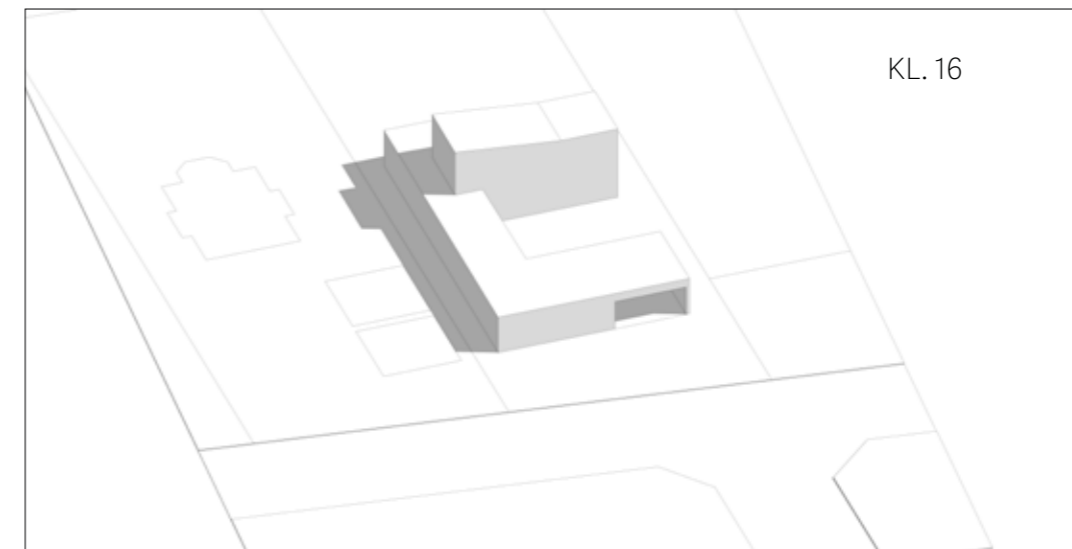
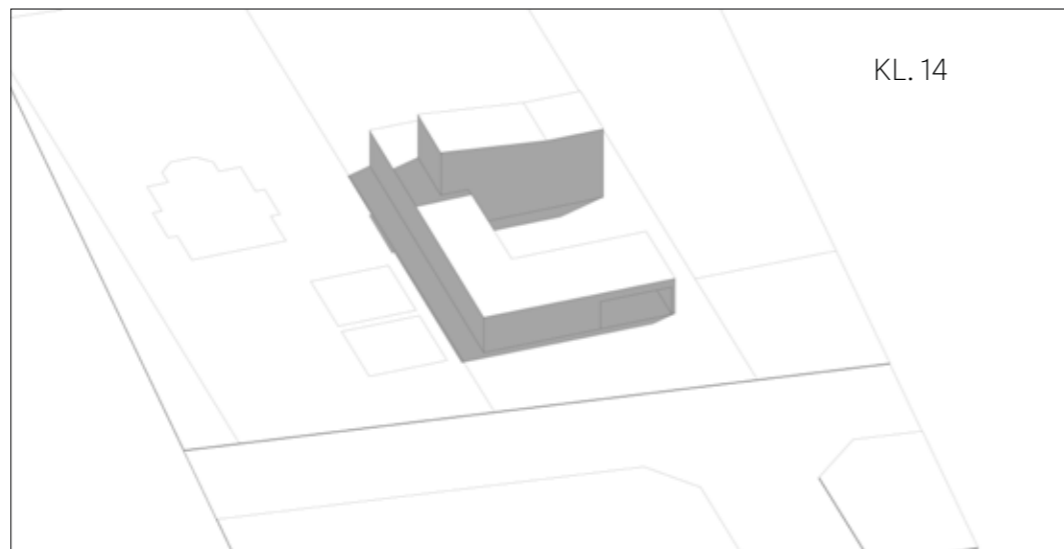
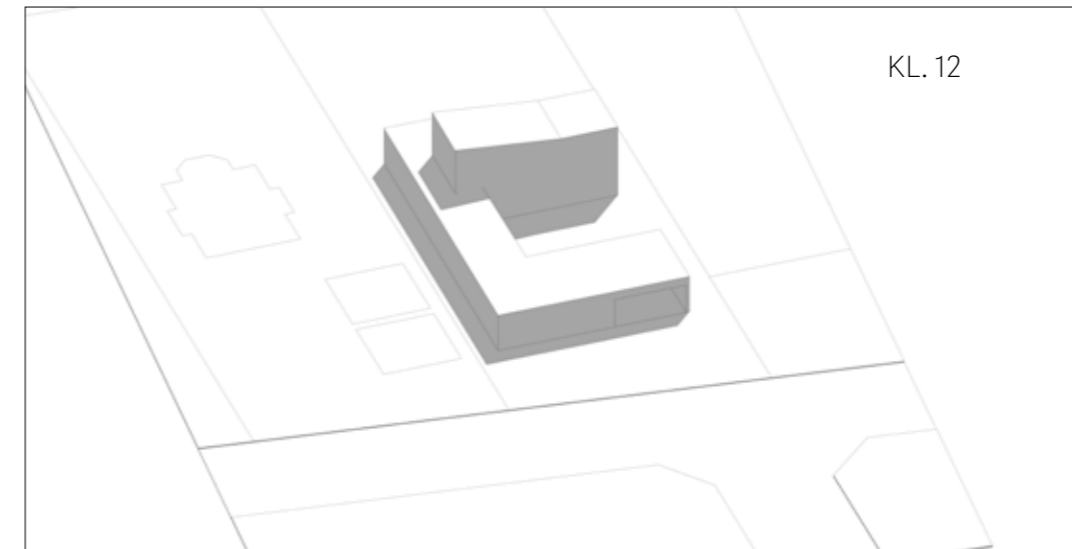
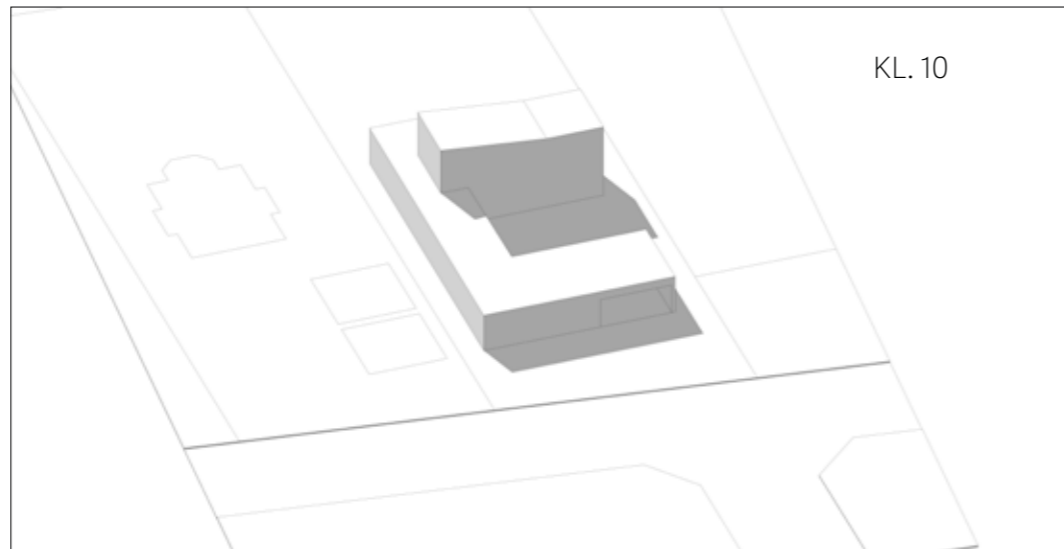


21. MARTS

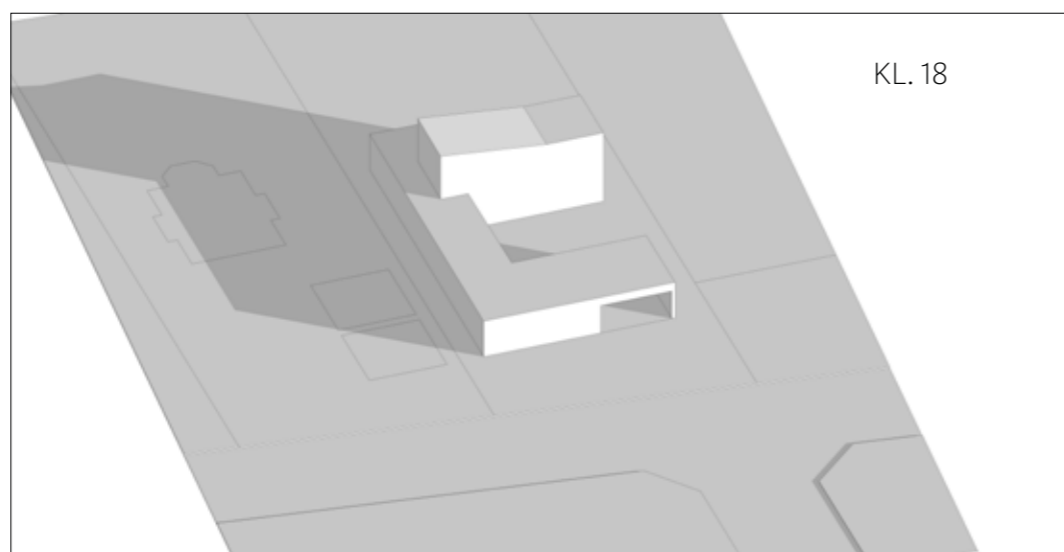
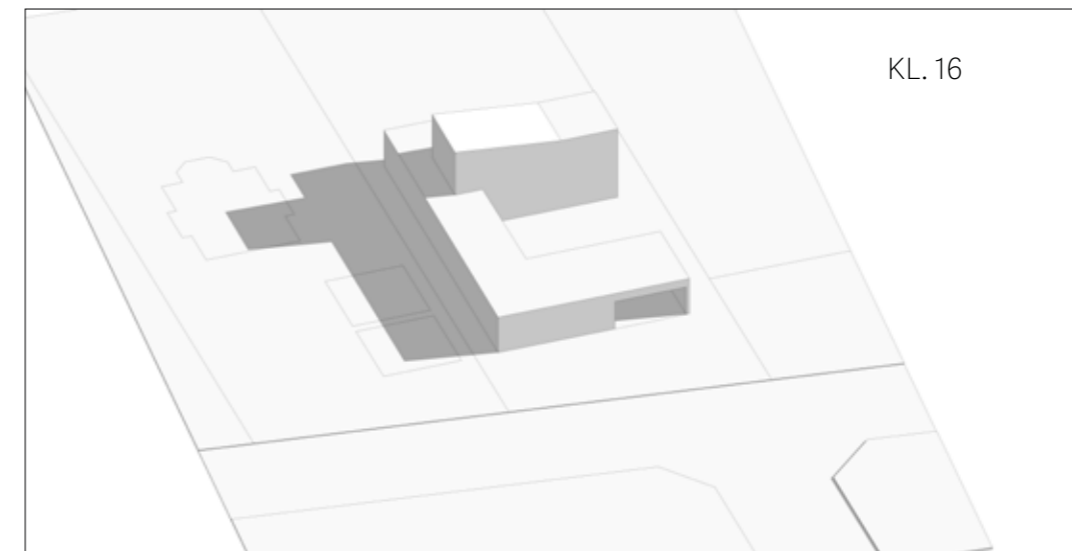
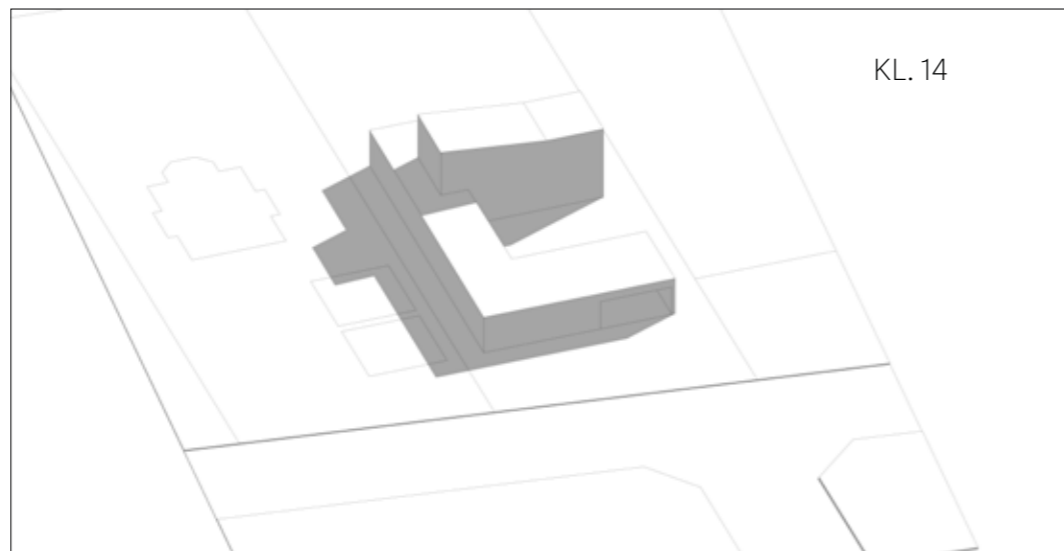
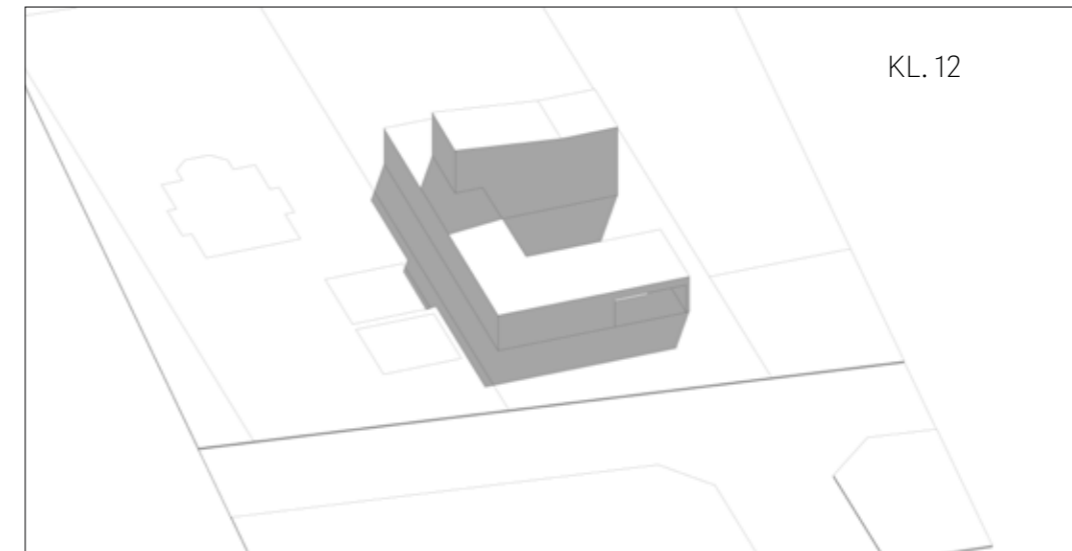
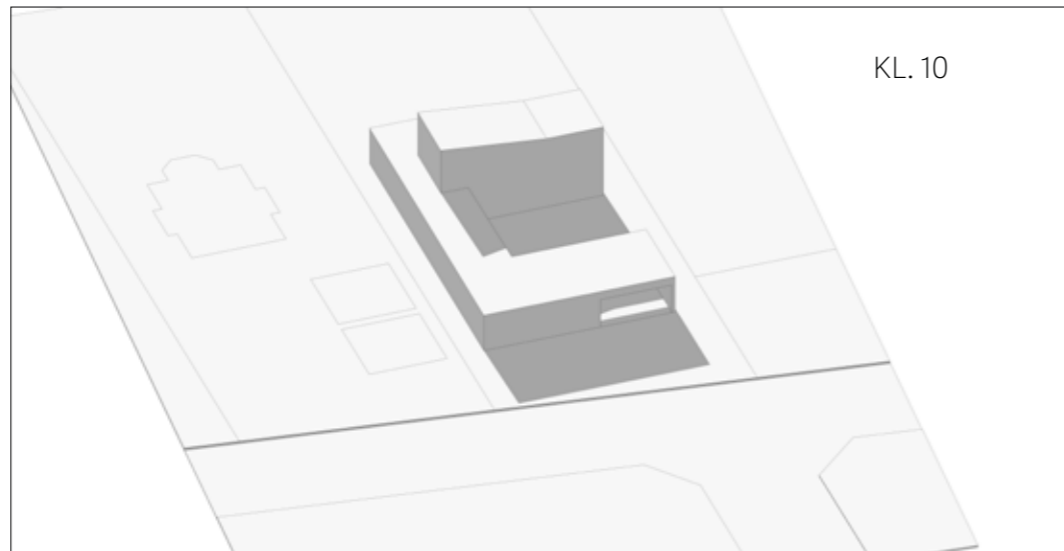


TIL SAMMENLIGNING SADEL-
TAGSHUS MED 2,5 METER TIL
SKEL.

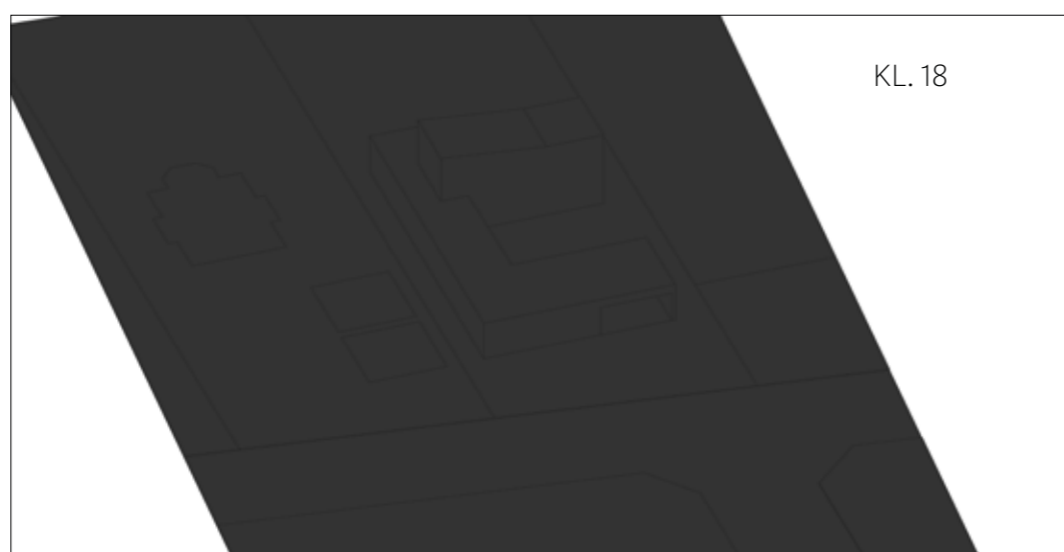
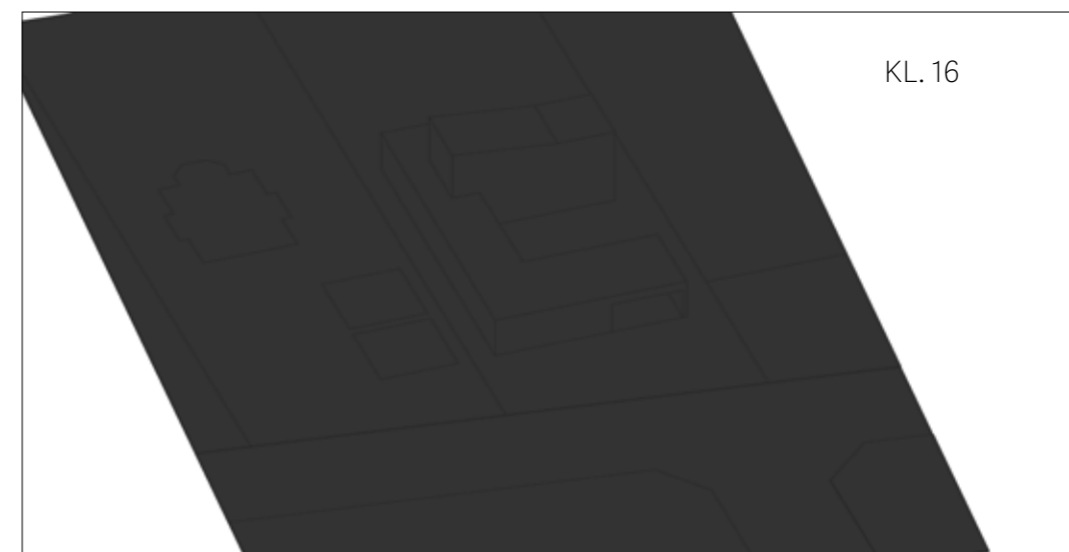
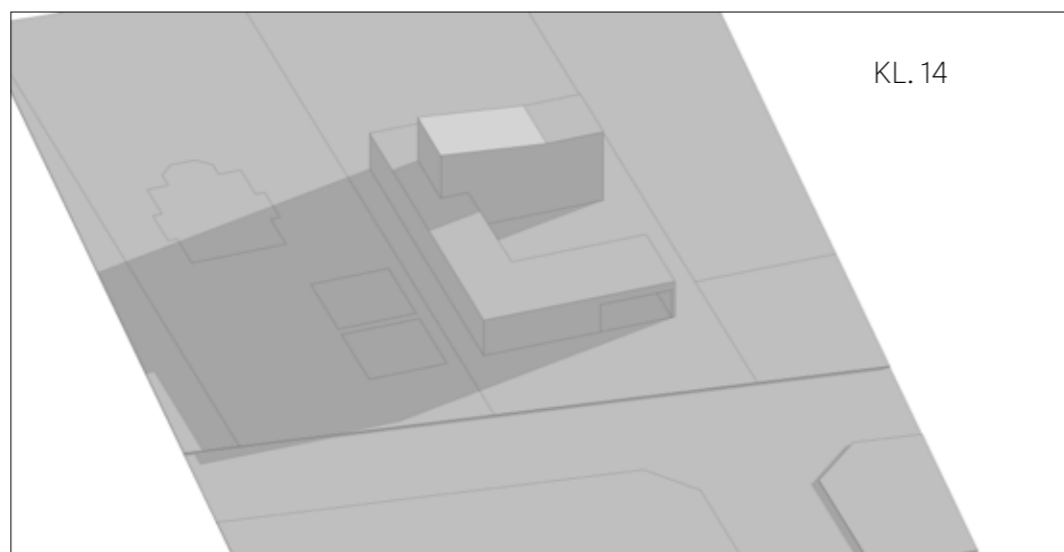
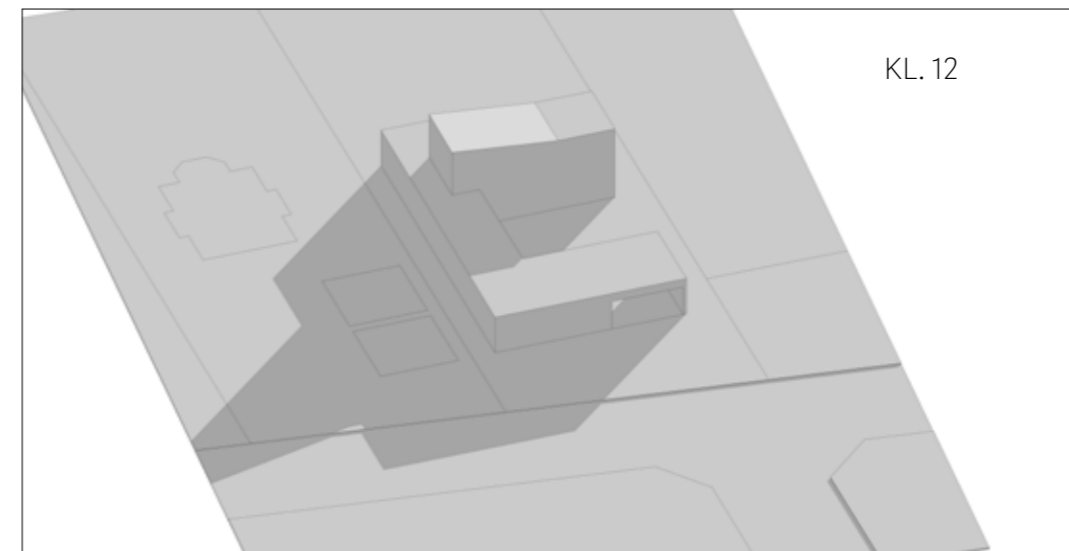
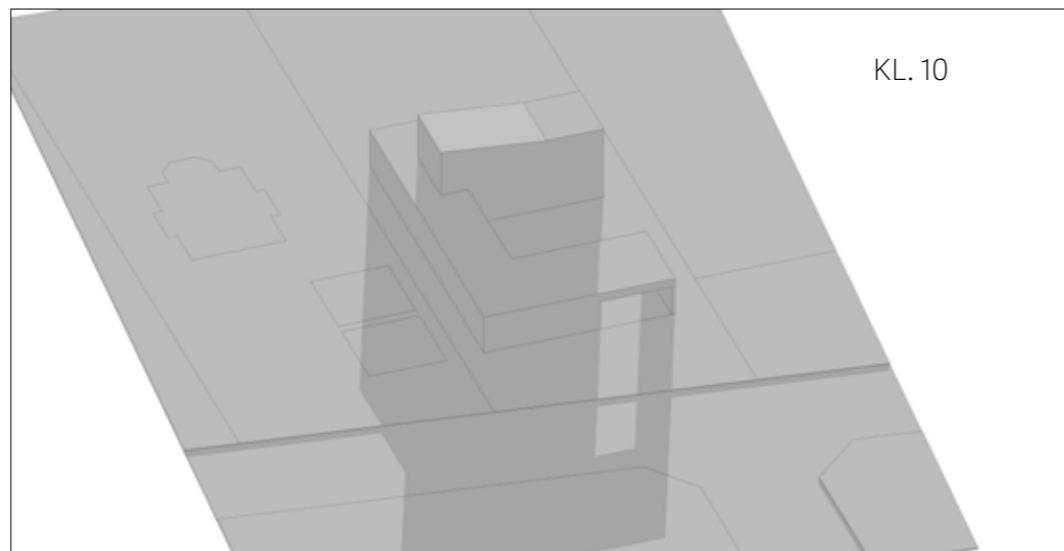
21. JUNI



21. SEPTEMBER



21. DECEMBER



FORUDSÆTNINGER:

-TERRÆN ER PLACERET I KOTE 1.370

-HØJDER OG AFSTANDE TIL SKEL I.H.T. SITUATIONSPLAN J.NR 16.410 UDFØRT AF LANDINSPEKTØR-FIRMA HYLDEGAARD D. 26 FEBRUAR 2024

-RIDS AF STRANDVANGEN 16 I.H.T. TEGNING (99)3.1 FRA BYGGEANSØGNING PÅ EJENDOMMEN, SAMT TEGNING 2000 - 074 AFSÆTNING AF ENFAMILIESHUS FRA DEN 08.05.2000.

-RIDS AF SKUR I.H.T TEGNING (99)1.2 BELIGGENHEDSPLAN FRA D. 26.04.2000